



Ohio Department of Transportation - District 9
Kathleen Fuller, Public Information Officer
740-774-8834/740-637-9037
kathleen.fuller@dot.ohio.gov

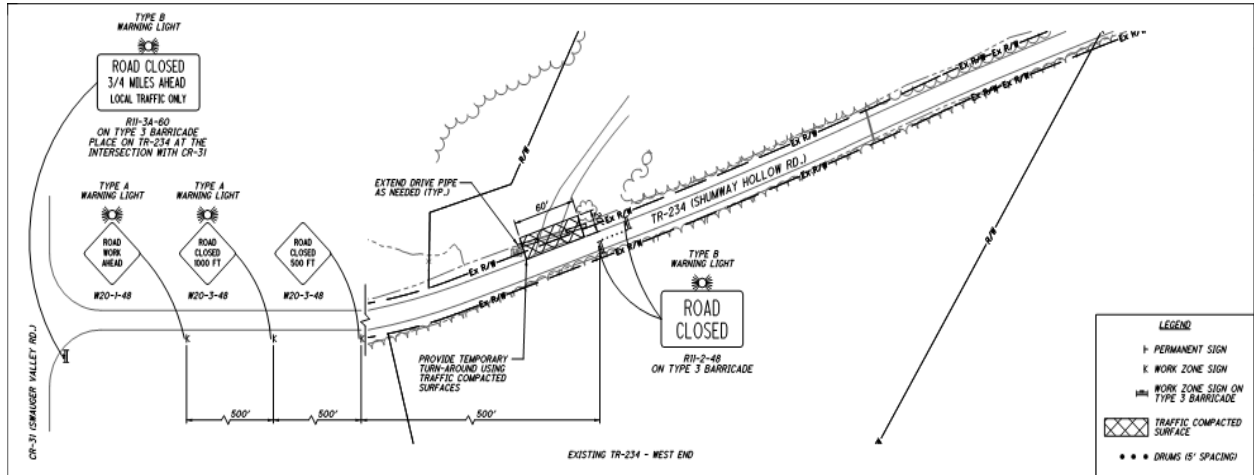
SOUTHERN OHIO VETERANS MEMORIAL HIGHWAY

NOTICE OF ROUTE CLOSURE OR RESTRICTION

SCI-823-0.00

COUNTY:	Scioto	CITY:	Minford
ROUTE:	823	MILE MARKER:	NA
RESTRICTION TYPE:	ROAD CLOSURE		
RESTRICTION START:	07/15/15	RESTRICTION END:	December 2018
LANES MAINTAINED:	NONE	WIDTH RESTRICTION:	NA
MAINTENANCE OF TRAFFIC:	Shumway Hollow will be closed for the duration of the construction activities and will not be opened until the new, relocated Shumway Hollow Road is constructed. A barricade and proper "no outlet" signage will be placed on the east end of Shumway at the railroad right-of-way averting any thru traffic. A turnaround will be constructed at the west end of Shumway where the construction limits begin allowing traffic to safely turn around and take an alternate route. The new, relocated Shumway will not be open until December of 2018.		
DESCRIPTION OF WORK:	Relocation of Shumway Hollow Rd.		
LOCATION DESCRIPTION:	Shumway Hollow is located between S.R. 335 & Swauger Valley Rd.		
WORK COMPLETED BY:	December 2018		
ODOT CONTACT:	Tom Barnitz	PHONE:	740-774-8877
CONTRACTOR CONTACT:	Todd Thatcher	PHONE:	740-326-3320

SHUMWAY HOLLOW CLOSURE WEST END



SHUMWAY HOLLOW CLOSURE EAST END

